

LS1040

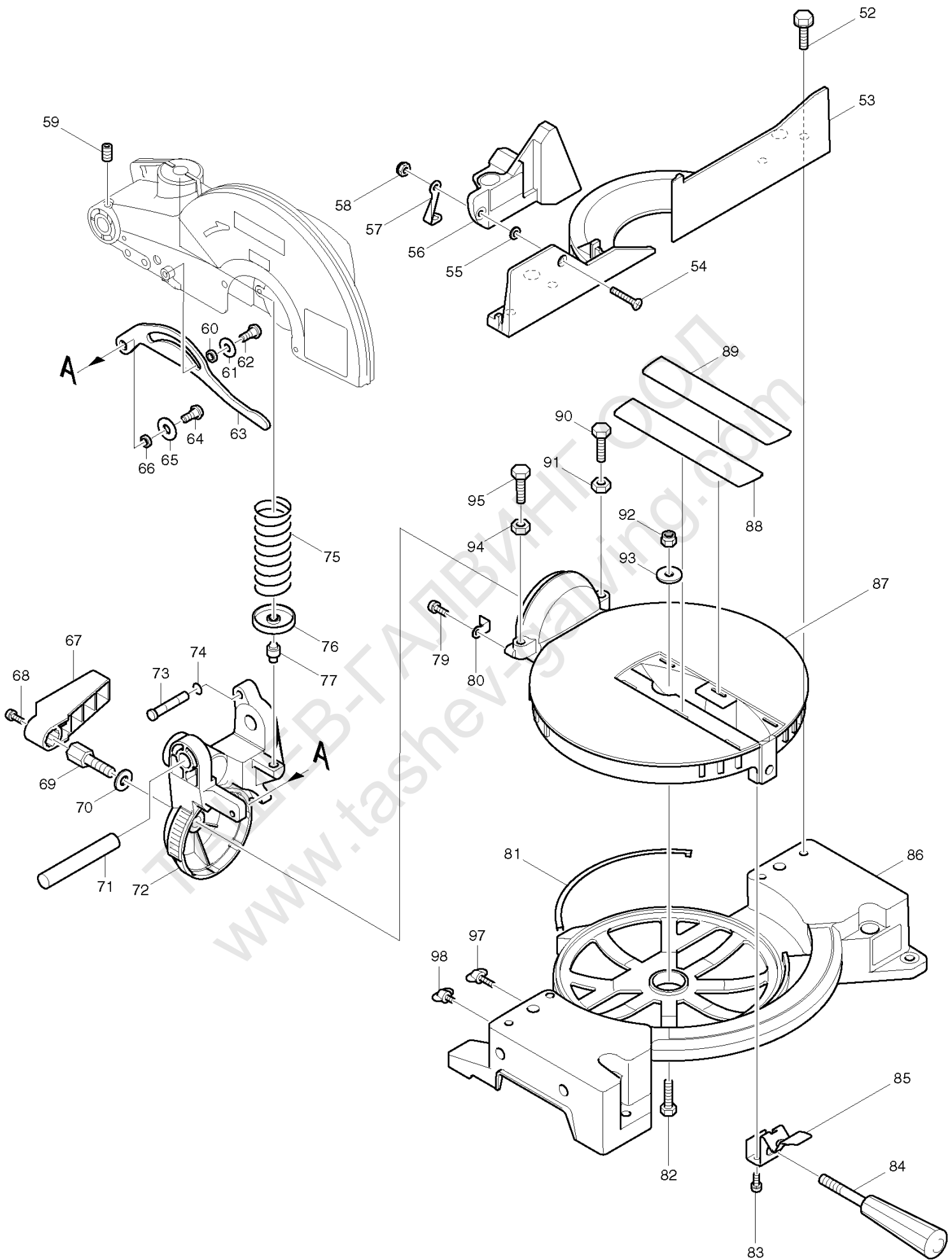
POS	Teile-Nr.	Bezeichnung
1	416004-6	GRIFFSCHALE LS1040/F
2	211206-7	KUGELLAGER 6202LLB
3	253853-8	U-SCHEIBE 15 HR1800/DA4030
3	267280-3	U-SCHEIBE 15 LS/LH/1040/F
4	343641-2	SPINDELARRETIERUNG LS1030/40/F
5	241909-9	LÜFTERRAD 80 LS/LH/1040/F
6	516718-8	ANKER LS/LH/1040/F
6		
7	681640-9	ISOLIERSCHEIBE LS1040/KP312S/
8	211061-7	KUGELLAGER 6000LLB
9	416442-2	LUFTABLEITPLATTE LS1040/F
10	526068-3	FELD LS1040/F
11	265995-6	SELBSTSCHNEID. SCHRAUBE 4x18
12	687063-9	KABELKLEMMPLATTE 687063-9
12	687052-4	KABELKLEMMPLATTE
13	665865-3	POWER SUPPLY CORD 1.0-2-2.5
14	682540-6	KABELSCHUTZ 9.3-90
15	851559-8	NAME PLATE LS1040
16	265995-6	SELBSTSCHNEID. SCHRAUBE 4x18
17	911383-2	SCHRAUBE M6x60
18	411478-6	Einschalt-Sicherheitsstift
19	643650-4	KOHLLENKAPPE 6.5x18 (CB153)
20	181044-0	KOHLLEN CB-153 (CB-152)
21	150786-7	MOTORGEHÄUSE LS1040
21	153794-7	MOTORGEHÄUSE LS1040 neu
21	154561-3	MOTORGEHÄUSE LS1040 neuer
22	651923-1	SCHALTER TG70B
23	231457-6	DRUCKFEDER 3 UH4510A/LS1013/
24	416000-4	ENTRIEGELUNGSHEBEL LS1013/40F
25	415999-0	SCHALTERHEBEL LS1013/1040F/12
26	414546-4	SCHALTERNOCKE LS1013/1214/104
27	266029-8	SELBSTSCHNEID. SCHRAUBE 5x65
28	231297-2	DRUCKFEDER LS1030/1040/2704/L
29	251667-9	6-KANTSCHRAUBE M8x75
30	262511-5	GUMMIHÜLSE 6 262511-5
31	265995-6	SELBSTSCHNEID. SCHRAUBE 4x18
32	416007-0	SCHUTZANSCHLAG LS1040/F
33	226465-0	ZAHNRAD 42 LS/LH/1040/F
34	316821-3	LAGERSCHILD LS/LH/1040/F
35	211256-2	KUGELLAGER 6203LLB 211256-2
36	285685-5	LAGERABDECKUNG 64 LS/LH/1040/F
37	322865-3	SPINDEL LS/LH/1040/F
38	224333-1	FLANSCH 53 LS1013/1040/F/LH1

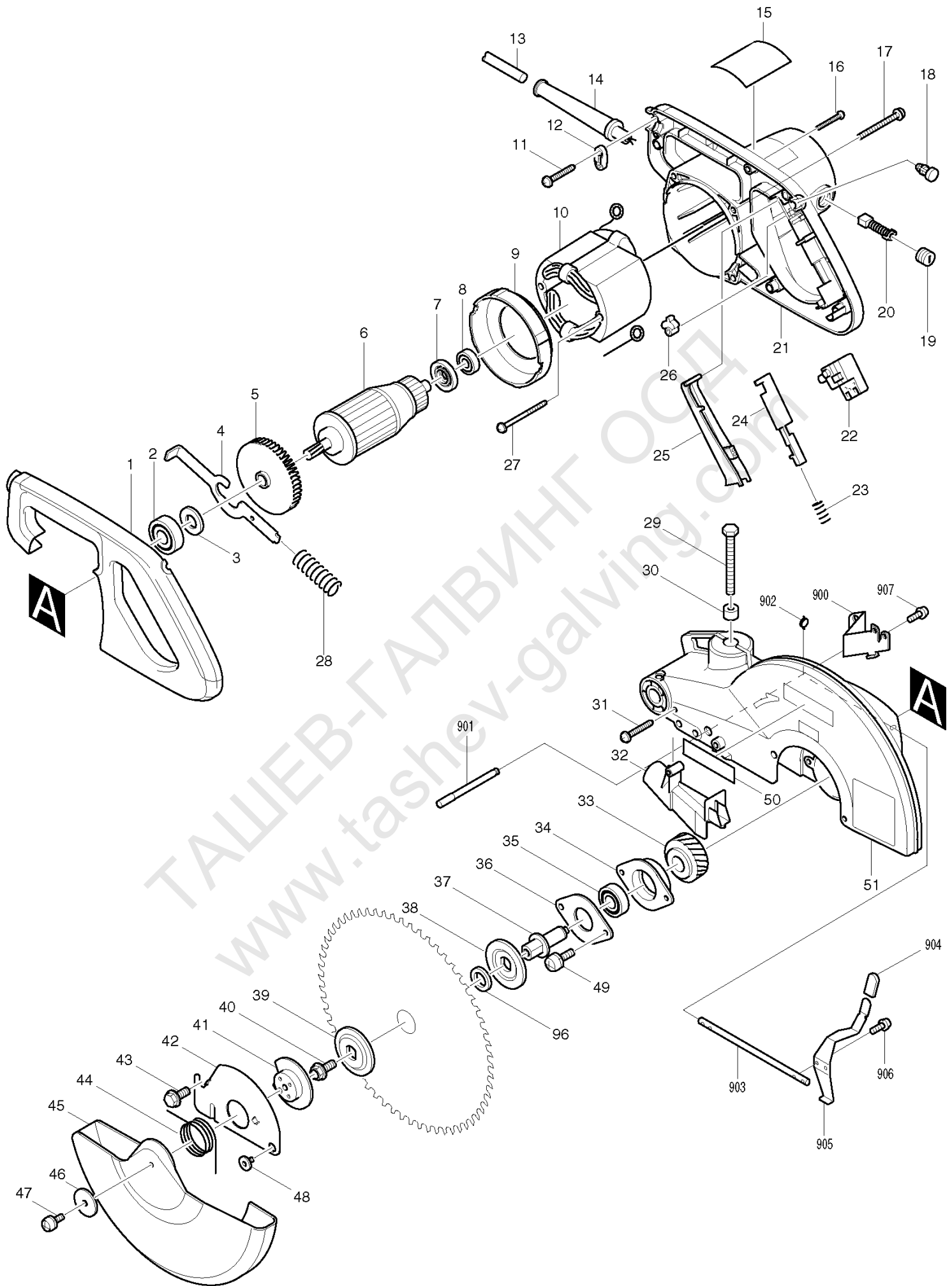
39	224333-1	FLANSCH 53 LS1013/1040/F/LH1
40	265355-2	FLANSCHSCHRAUBE M8x20
41	343639-9	SCHUTZHALTERUNG LS1040/1013/LH
42	344380-7	MITTELDECKEL LS/LH/1040/F
43	265324-3	FLANSCHSCHRAUBE M8x12
44	231593-8	RÜCKZUGSFEDER 36 LS1040/F/30
45	416003-8	BEWEGL. SCHUTZ LS1040/F
46	267136-0	SCHEIBE 5
47	911213-7	SCHRAUBE M5x12
48	265985-9	INBUSSCHRAUBE M6 LS/LH/1040/F
49	911223-4	SCHRAUBE M5x16
50	819064-1	"ETIKETTE "" M A K I T A ""
51	151490-1	SÄGEBLATTGEHÄUSE LS1040/F
51	151490-1	SÄGEBLATTGEHÄUSE LS1040/F
51	154560-5	SÄGEBLATTGEHÄUSE LS1040/F
51	188330-0	SÄGEBLATTGEHÄUSE LS1040/F neu
51		
52	921451-3	6-KANTSCHRAUBE M8X30 921451-
52	265488-3	6-KANTSCHRAUBE M8x30 LS1040F/L
53	316826-3	PARALLELANSCHLAG LS1040/F
53	316826-3	PARALLELANSCHLAG LS1040/F
54	912342-9	SENKKOPFSCHRAUBE M6x25
55	253715-0	SCHEIBE 6
56	150760-5	ANSCHLAGPLATTE LS1040/F
56	150760-5	ANSCHLAGPLATTE LS1040/F
56	154559-0	ANSCHLAGPLATTE LS1040/F neu
57	344476-4	BEWGL.ANSCHLAGPL. (KLEIN) LS10
58	252014-7	6-KANTMUTTER M6-10 LS1013/40
59	251961-9	INBUSSCHRAUBE M6x10
60	257162-7	RING 7 LS1030/1040/F/LH1040/F
61	253823-7	SCHEIBE 7
62	265984-1	INBUSSCHRAUBE M6 MIT BUND
63	344377-6	GELENKPLATTE LS/LH/1040/F
64	265984-1	INBUSSCHRAUBE M6 MIT BUND
65	253823-7	SCHEIBE 7
66	257162-7	RING 7 LS1030/1040/F/LH1040/F
67	416006-2	KLEMMHEBEL 100
68	911113-1	SCHRAUBE M4x10
69	265437-0	SCHRAUBE M10 LS/LH/1040/F
70	253024-7	SCHEIBE 10
71	256836-7	STIFT 16 LS/LH/1040/F
72	150664-1	ARM LS1040/F
72	150664-1	ARM LS1040/F
72	154463-3	ARM LS/LH/1040/F

73	322317-4	FIXIERSTIFT LS1040/F
74	213021-5	O-RING 5
75	233152-4	DRUCKFEDER 28 LS1040/F
76	343638-1	FEDERHALTER LS1030 (NUR LS1
76	344464-1	FEDERHALTER LS/LH/1013/1040
77	256260-4	STIFT 8 LS1040 BITTE 25628
77	256280-8	STIFT 8 LS/LH/1040/F
79	911113-1	SCHRAUBE M4x10
80	344385-7	PFEIL F. WINKELGRADE LS/LH104
81	343799-7	GLEITPLATTE LS/LH/1040/F
82	921452-1	SCHRAUBE M8x30 LS/LH/1040/F
83	911213-7	SCHRAUBE M5x12
84	273495-2	GRIP 32
85	344381-5	WINKELFIXIERFEDER LS/LH1040/F
86	150759-0	GRUNDPLATTE LS1040/F
86	150759-0	GRUNDPLATTE LS1040/F
86	154558-2	GRUNDPLATTE LS1040/F
87	316824-7	DREHTELLER LS/LH/1040/F
87	316824-7	DREHTELLER LS/LH/1040/F
88	416001-2	GLEITPLATTE LS1040/F
89	416001-2	GLEITPLATTE LS1040/F
90	921452-1	SCHRAUBE M8x30 LS/LH/1040/F
91	931402-8	MUTTER M8
92	252105-4	6-KANTMUTTER M8-13
93	253762-1	SCHEIBE 8 LS/LH/1040/F
94	931402-8	MUTTER M8
95	921452-1	SCHRAUBE M8x30 LS/LH/1040/F
96	257137-6	RING 16 LS1013/LS1040/F
96	257262-3	RING 16 alle LS/LH/LF/Sägen
97	251887-5	FLÜGELSCHRAUBE M6x10
98	265708-5	SCHRAUBE M6x20 LS/LH/1040/F
900	344572-8	ARRETIERPLATTE LS1040/F
901	323720-2	SPERRSTIFT 8 LS1040/F
902	231633-2	RÜCKZUGFEDER 8 LS1040/1214/F
903	323721-0	STANGE 8 LS1040/F
904	421589-9	KAPPE LS1013/0714/F/BLS820S/L
905	344573-6	FESTSTELLHEBEL LS1040
905	345803-8	FESTSTELLHEBEL LS1040/F neu
906	911113-1	SCHRAUBE M4x10
907	911113-1	SCHRAUBE M4x10
908	424018-1	Zusatzhebel LS1040 neu
1001	411478-6	Einschalt-Sicherheitsstift
1002	762001-3	TRIANGULAR RULE
1003	782212-4	SOCKET WRENCH 13
1004	122523-9	DUST BAG ASS'Y

1005	122531-0	SUB PLATE ASS'Y
1005	193471-9	SUB PLATE ASS'Y
1006	122536-0	WISE ASS'Y
1007	257022-3	RING 16 LS1030/LS1013/1040F/
1008	322312-4	SEITLICHE AUFLAGE LS1040/0714
5002	645105-5	KONDENSATOR
5005	651941-9	SCHALTER V-15-2A5
5018	A-80961	T.C.T.SAW BLADE 255X32X30
5019	646073-5	Drosselspule LS1040F
5022	819064-1	"ETIKETTE "" M A K I T A ""
5022	819214-8	MAKITA-Logo-Aufkleber LS1013L/

ТАШЕВ-ГАЛВИНГ ООД
www.tashev-galving.com





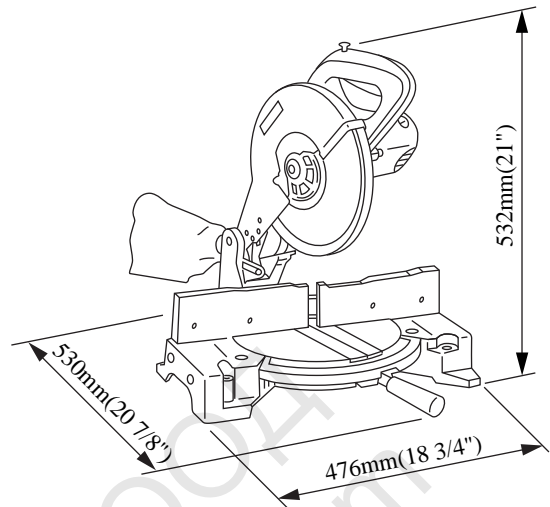
Models No. ▶ LS1040

Description ▶ 255mm(10") Miter Saw

CONCEPTION AND MAIN APPLICATIONS

Model LS1040 is upgraded version of the existing Model LS1030. Its brief benefits are;

- *Higher rigidity of all over the body
- *More accurate cut
- *Bevel cut (left only)
- *More efficient chip/sawdust collection
- *More stable cutting by holding material more widely with sub fence



► Specifications

Voltage (V)	Current (A)	Cycle (Hz)	Continuous Rating (W)		Max. Output(W)
			Input	Output	
100	15.0	50/60	1430	860	1800
115	15.0	50/60	1650	1000	2300
200	8.6	50/60	1650	1000	2300
220	7.9	50/60	1650	1000	2300
230	7.5	50/60	1650	1000	2300
240	7.2	50/60	1650	1000	2300

No Load Speed		4600rpm
Arbor diameter	U.S.A. ,Canada	15.88mm(5/8")
	Europe	30mm(1-3/16")
	Other countries	25.4mm(1")
Blade diameter		255mm(10")-260mm(10-1/4")
Net weight		11kg(24.2 lbs)
Power supply cord		2.5m(8.2 ft)

Cutting capacities (HxW) with saw blade 255mm

Miter angle	Bevel angle	
	0°	45° (left)
0°	90.5mm(3-9/16")x95mm(3-3/4")	48mm(1-7/8")x95mm(3-3/4")
	69mm(2-3/4")x130mm(5-1/8")	35mm(1-3/8")x130mm(5-1/8")
45° (left and right)	90.5mm(3-9/16")x67mm(2-5/8")	48mm(1-7/8")x67mm(2-5/8")
	69mm(2-3/4")x92mm(3-5/8")	35mm(1-3/8")x92mm(3-5/8")

► Standard equipment

- Dust Bag Ass'y -----1 pc.
 - Triangular Rule-----1pc.
 - Socket Wrench 13-----1 pc.
 - Switch Button (as a spare) -----2 pcs.
 - Sub Plate Assembly -----1 pc.
 - Holder 255 -----2 pcs. (except for U.S. A. or Canada)
 - Vise Ass'y (Vertical Vise)-----1 pc.(except for U.S.A.or Canada)
 - Cross-cut Saw Blade 255-----1 pc. (except for U.S. A. or Canada)
- The standard equipment for the tools shown may differ form country to country.

► Optional accessories

Vise Ass'y(Vertical Vise)
 Vise Ass'y(Horizontal Vise)
 Holder 255
 Holder Set
 Set Plate
 Crown Molding Stopper Set
 Ring 15.88 (for arbor diameter:25.4mm)
 Ring 16 (for arbor diameter:25mm)
 Ring 16 (for arbor diameter:30mm)
 T.C.T. Saw Blade

► Features and benefits

- 1.Double insulated
- 2.See the sheets attached for more information.

More efficient chip/sawdust collection

- More efficient collection

LS1040	87%
LS1030	34%

- Less ejection toward operator

Light weight : 11kg

Blocking mechanism at the rest position
 (for European countries only)

Locked at the upper position automatically,
 released by actuating the lever

Handle for carrying

Rigid arm

Accurate cutting
 can be performed.

Bevel cut can be
 performed.
 (0°~45°in left way)

Crown Molding Stopper Set
 (Optional accessory)

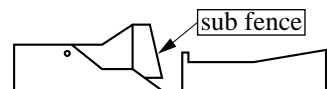
Convenient for setting
 4-1/2" crown molding
 slantwise

Clear scale of angle

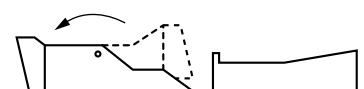
Movable sub fence

Material can be held widely
 by turning sub fence to right side.

At 0° cutting	Turn to right side
------------------	-----------------------



At bevel cutting	Turn to left side
---------------------	----------------------



Positive stops at turn base
 for angles (left or right)
 0°,15°,22.5°,30°,45°

Very quiet

Noise at no load

LS1040	85dB
LS1030	92dB (=total noise of five LS1013's)

► Comparison

Model No.	LS1040	LS1030
Rated current (A) [120V]	15	12
Input(w)	1650	1380
No load speed(rpm)	4600	4600
Miter angle	L:45° - R:52°	L:45° - R:57°
Bevel angle	L:45° - 0°	N/A
Net weight	11.0kg (24.2 lbs)	10.6kg (23.3 lbs)

Cutting capacities [HxW] (at Blade diameter : 255mm)

Model No.		LS1013		LS1011
Bevel angle		0°	Left 45°	
Miter angle	0°	90.5x95mm (3-9/16"x3-3/4") 69x130mm (2-3/4x5-1/8")	48x95mm (1-7/8"x3-3/4") 35x130mm (1-3/8x5-1/8")	89x89mm (3-1/2"x3-1/2") 70x126mm (2-3/4x4-15/16")
	45°	90.5x67mm (3-9/16"x2-5/8") 69x92mm (2-3/4x3-5/8")	48x67mm (1-7/8"x2-5/8") 35x92mm (1-3/8x3-5/8")	89x63mm (3-1/2"x2-1/2") 70x89mm (2-3/4x3-1/2")

► Repair

Disassembling/assembling of the blade case and compression spring
[Disassembling]

1. Lower the blade case(motor body) at maximum and insert the pin(jig) with 4 -6.5 mm in dia. and 120 mm or more in length into the two holes shown on the right figure.(The driver can be used instead of the pin.) It can be fixed while the compression spring is shrunk.
2. To disassemble the compression spring, place the block with the suitable size between pins, use the arbor to press the spring holder, pull out the two pins, and then lift up little by little to disconnect it.

Note) Be sure to take away both two pins before lifting up.

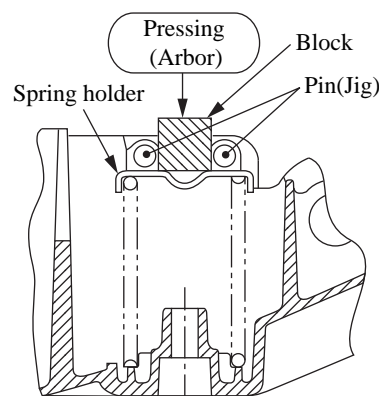
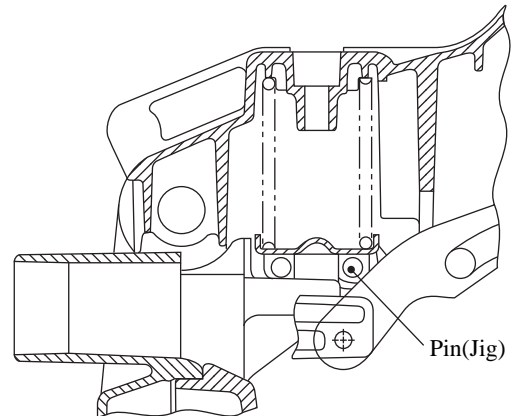
[Assembling]

Proceed in the reverse orders against assembling.

Disassembling/assembling of link plate

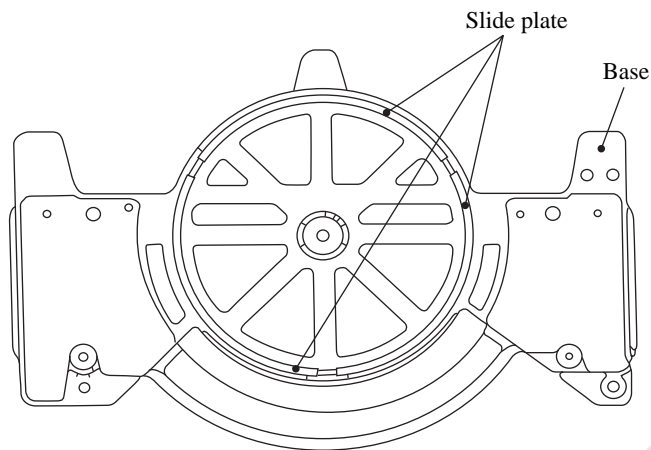
Use the adhesive to assemble the mounting screws

(arm side and blade case side) for link plate.(Adhesive : Screw lock super 1342)

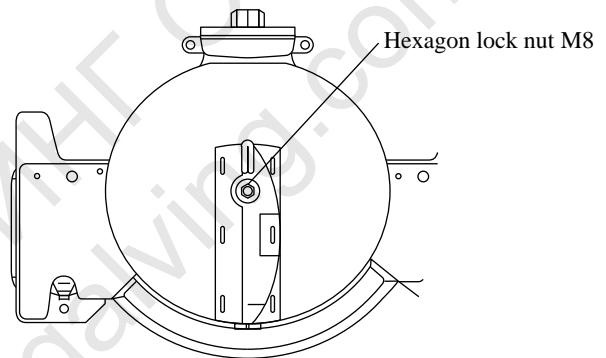


Assembling of slide plate

Assemble the slide plate according to the base shape as shown on the below figure.



Fastening of the hexagon lock nut M8 for mounting the turn base
Adjust the fastening conditions of hexagon lock nut M8 at center on the turn base so that the turn base can smoothly turn without clearance.



Greasing points

Grease the MAKITA grease on the turning and moving points shown below.

Up/down swinging points of the blade case

Blade case, Arm, Rod 16

Arm turning point

Arm, Turn base(faucet joint for mounting arm and screws on the center)

Turning point and moving face of turn base

Turn base, Center on the base, Slide plate

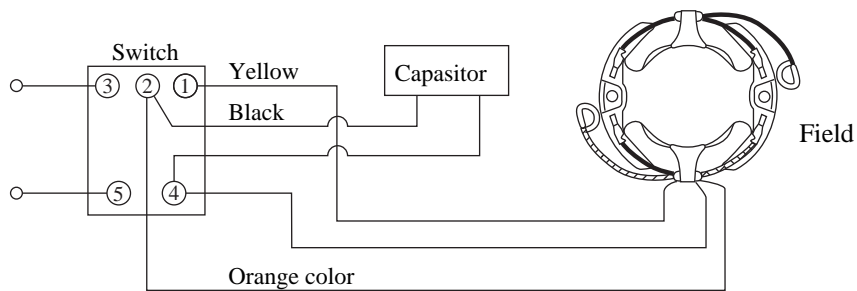
Positioning points of turn base

Base, Knock spring

Link plate edge

► Circuit drawing

<Low pressure specifications> The condenser is not used in some areas.



<High pressure specifications> The condenser is not used in some areas.

